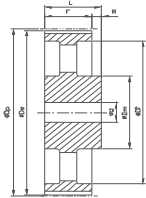
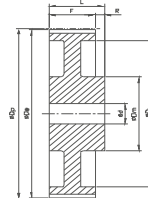


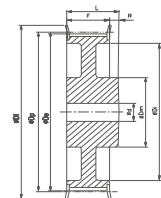
Ausf. 6F



Ausf. 6A

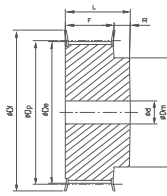


Ausf. 6W

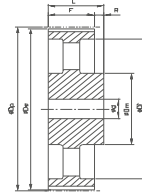


Ausf. 6WF

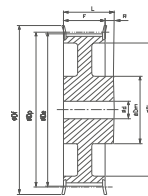
Bezeichnung	Anzahl der Zähne	Ausführung	Material	D _p (mm)	D _e (mm)	D _f (mm)	F (mm)	L (mm)	D _m (mm)	D _i (mm)	Vorbereitung d (mm)	Fertigbohrung d _{max} (mm)	Gewicht (≈kg)
L - Teilung 9,525 mm für Riemenbreite 050													
10 L 050	10	6F	ST	30,32	29,56	37	19	28	20	-	8	13	0,110
12 L 050	12	6F	ST	36,38	35,62	43	19	30	24	-	8	17	0,190
13 L 050	13	6F	ST	39,41	38,65	44	19	30	28	-	8	19	0,210
14 L 050	14	6F	ST	42,45	41,68	48	19	30	28	-	8	20	0,250
15 L 050	15	6F	ST	45,48	44,72	51	19	30	34	-	8	23	0,300
16 L 050	16	6F	ST	48,51	47,75	54	19	32	36	-	8	23	0,330
17 L 050	17	6F	ST	51,54	50,78	57	19	32	36	-	10	24	0,360
18 L 050	18	6F	ST	54,57	53,81	60	19	32	40	-	10	24	0,410
19 L 050	19	6F	ST	57,61	56,84	64	19	32	40	-	10	24	0,450
20 L 050	20	6F	ST	60,64	59,88	66,5	19	32	40	-	10	28	0,500
21 L 050	21	6F	ST	63,67	62,91	70	19	32	45	-	10	28	0,550
22 L 050	22	6F	ST	66,70	65,94	75	19	32	45	-	10	30	0,620
24 L 050	24	6F	ST	72,77	72,00	79	19	32	55	-	10	30	0,680
26 L 050	26	6F	ST	78,83	78,07	86	19	32	58	-	11	30	0,820
28 L 050	28	6F	ST	84,89	84,13	91	19	32	58	-	11	30	0,920
30 L 050	30	6F	ST	90,96	90,20	97	19	32	70	-	11	30	1,100
32 L 050	32	6F	ST	97,02	96,26	102	19	32	70	-	11	30	1,200
36 L 050	36	6F	ST	109,15	108,39	115	19	32	70	-	11	30	1,000
40 L 050	40	6WF	ST	121,28	120,51	128	19	32	70	100	11	30	1,100
44 L 050	44	6WF	ST	133,40	132,64	142	19	32	70	112	11	30	1,200
48 L 050	48	6WF	ST	145,53	144,77	150	19	32	70	124	11	30	1,300
60 L 050	60	6W	GG	181,91	181,15	-	19	42	75	160	14	30	1,300
72 L 050	72	6A	GG	218,30	217,53	-	19	42	75	197	14	30	1,700
84 L 050	84	6A	GG	254,68	253,92	-	19	42	75	233	14	30	1,900
L - Teilung 9,525 mm für Riemenbreite 075													
10 L 075	10	6F	ST	30,32	29,56	37	25	38	20	-	8	13	0,150
12 L 075	12	6F	ST	36,38	35,62	43	25	38	24	-	8	17	0,230
13 L 075	13	6F	ST	39,41	38,65	44	25	38	28	-	8	19	0,260
14 L 075	14	6F	ST	42,45	41,68	48	25	38	28	-	11	20	0,320
15 L 075	15	6F	ST	45,48	44,72	51	25	38	34	-	11	23	0,350
16 L 075	16	6F	ST	48,51	47,75	54	25	38	36	-	11	23	0,420
17 L 075	17	6F	ST	51,54	50,78	57	25	38	36	-	11	24	0,450
18 L 075	18	6F	ST	54,57	53,81	60	25	38	40	-	11	24	0,510
19 L 075	19	6F	ST	57,61	56,84	64	25	38	40	-	11	24	0,570
20 L 075	20	6F	ST	60,64	59,88	66,5	25	38	45	-	11	28	0,630
21 L 075	21	6F	ST	63,67	62,91	70	25	38	45	-	11	28	0,700
22 L 075	22	6F	ST	66,70	65,94	75	25	38	55	-	11	30	0,750
24 L 075	24	6F	ST	72,77	72,00	79	25	38	58	-	11	30	0,850
26 L 075	26	6F	ST	78,83	78,07	86	25	38	58	-	11	30	1,000
28 L 075	28	6F	ST	84,89	84,13	91	25	38	70	-	11	30	1,200
30 L 075	30	6F	ST	90,96	90,20	97	25	38	70	-	11	30	1,400
32 L 075	32	6F	ST	97,02	96,26	102	25	38	70	-	11	30	1,500
36 L 075	36	6F	ST	109,15	108,39	115	25,0	38	70	-	11	32	1,300
40 L 075	40	6WF	ST	121,28	120,51	128	25,0	38	70	100	11	35	1,600



Ausf. 6F



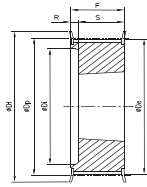
Ausf. 6A



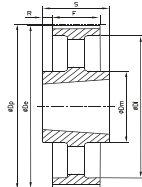
Ausf. 6WF

Bezeichnung	Anzahl der Zähne	Ausführung	Material	D _p (mm)	D _c (mm)	D _i (mm)	F (mm)	L (mm)	D _m (mm)	D ₁ (mm)	Vorbereitung d (mm)	Fertigbohrung d _{max} (mm)	Gewicht (=kg)
H - Teilung 12,7 mm für Riemenbreite 075													
14 H 075	14	6F	ST	56,60	55,22	64	26,4	40	40	-	8	24	0,500
16 H 075	16	6F	ST	64,68	63,31	70	26,4	40	45	-	8	26	0,600
18 H 075	18	6F	ST	72,77	71,39	79	26,4	40	55	-	11	32	0,800
19 H 075	19	6F	ST	76,81	75,44	82,5	26,4	40	60	-	11	35	1,000
20 H 075	20	6F	ST	80,85	79,48	87	26,4	40	62	-	11	35	1,100
21 H 075	21	6F	ST	84,89	83,52	91	26,4	40	65	-	11	38	1,200
22 H 075	22	6F	ST	88,94	87,56	94	26,4	40	68	-	11	38	1,400
24 H 075	24	6F	ST	97,02	95,65	102	26,4	40	72	-	11	42	1,600
26 H 075	26	6F	ST	105,11	103,73	112	26,4	40	80	-	11	45	1,800
28 H 075	28	6F	ST	113,19	111,82	120	26,4	40	80	-	11	45	2,000
30 H 075	30	6F	ST	121,28	119,90	128	26,4	40	80	-	11	45	2,100
32 H 075	32	6F	ST	129,36	127,99	135	26,4	40	80	-	11	45	2,200
36 H 075	36	6F	ST	145,53	144,16	150	26,4	40	80	-	11	45	2,400
40 H 075	40	6F	ST	161,70	160,33	168	26,4	40	80	-	11	45	2,800
44 H 075	44	6WF	GG	177,87	176,50	184	26,4	40	80	150	14	45	2,700
48 H 075	48	6WF	GG	194,04	192,67	200	26,4	45	90	166	14	50	3,000
H - Teilung 12,7 mm für Riemenbreite 100													
14 H 100	14	6F	ST	56,60	55,22	64	31,8	45	40	-	11	24	0,650
16 H 100	16	6F	ST	64,68	63,31	70	31,8	45	45	-	11	28	0,850
18 H 100	18	6F	ST	72,77	71,39	79	31,8	45	55	-	14	32	1,100
19 H 100	19	6F	ST	76,81	75,44	82,5	31,8	45	60	-	14	34	1,200
20 H 100	20	6F	ST	80,85	79,48	87	31,8	45	62	-	14	35	1,400
21 H 100	21	6F	ST	84,89	83,52	91	31,8	45	65	-	14	38	1,600
22 H 100	22	6F	ST	88,94	87,56	94	31,8	45	68	-	14	41	1,700
24 H 100	24	6F	ST	97,02	95,65	102	31,8	45	72	-	14	45	2,000
26 H 100	26	6F	ST	105,11	103,73	112	31,8	45	80	-	14	32	1,400
28 H 100	28	6F	ST	113,19	111,82	120	31,8	45	80	-	14	35	1,600
30 H 100	30	6F	ST	121,28	119,90	128	31,8	45	80	-	14	35	1,700
32 H 100	32	6F	ST	129,36	127,99	135	31,8	45	80	-	14	40	2,200
36 H 100	36	6WF	ST	145,53	144,16	150	31,8	45	80	118	14	45	3,000
40 H 100	40	6WF	ST	161,70	160,33	168	31,8	45	80	134	14	45	2,800
44 H 100	44	6WF	GG	177,87	176,50	184	31,8	50	80	150	14	45	3,100
48 H 100	48	6WF	GG	194,04	192,67	200	31,8	50	90	166	14	45	3,300
60 H 100	60	6A	GG	242,55	241,18	-	31,8	50	90	215	19	45	5,500
72 H 100	72	6A	GG	291,06	289,69	-	31,8	55	100	263	19	45	7,100
84 H 100*	84	6A	GG	339,57	338,20	-	31,8	55	100	312	19	45	8,200
96 H 100*	96	6A	GG	388,08	386,71	-	31,8	60	120	360	19	45	9,900
120 H 100*	120	6A	GG	485,10	483,73	-	31,8	60	120	458	19	50	13,100
H - Teilung 12,7 mm für Riemenbreite 150													
14 H 150	14	6F	ST	56,60	55,22	64	46	58	40	-	11	24	0,820
16 H 150	16	6F	ST	64,68	63,31	70	46	58	45	-	11	28	1,100
18 H 150	18	6F	ST	72,77	71,39	79	46	58	55	-	14	32	1,500
19 H 150	19	6F	ST	76,81	75,44	83	46	58	60	-	14	34	1,700
20 H 150	20	6F	ST	80,85	79,48	87	46	58	65	-	14	35	1,800

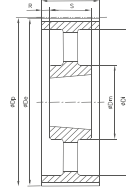
Bezeichnung	Anzahl der Zähne	Ausführung	Material	d _p (mm)	d _e (mm)	D _i (mm)	F (mm)	L (mm)	D _m (mm)	D _i (mm)	Vorbohrung d (mm)	Fertigbohrung d _{max} (mm)	Gewicht (≈kg)
21 H 150	21	6F	ST	84,89	83,52	91	46	58	65	-	14	38	2,200
22 H 150	22	6F	ST	88,94	87,56	94	46	58	68	-	14	41	2,300
24 H 150	24	6F	ST	97,02	95,65	102	46	58	72	-	14	45	2,600
26 H 150	26	6F	ST	105,11	103,73	112	46	58	80	-	14	32	1,700
28 H 150	28	6F	ST	113,19	111,82	120	46	58	80	-	14	35	1,900
30 H 150	30	6F	ST	121,28	119,90	128	46	58	80	-	14	35	2,100
32 H 150	32	6F	ST	129,36	127,99	135	46	58	80	-	14	40	2,600
36 H 150	36	6WF	ST	145,53	144,16	150	46	58	80	118	14	45	3,200
40 H 150	40	6WF	ST	161,70	160,33	168	46	58	80	134	14	45	3,800
44 H 150	44	6WF	GG	177,87	176,50	184	46	58	80	150	19	45	3,700
48 H 150	48	6WF	GG	194,04	192,67	200	46	65	90	166	19	45	4,000
60 H 150	60	6A	GG	242,55	241,18	-	46	65	90	215	19	48	5,100
72 H 150	72	6A	GG	291,06	289,69	-	46	65	100	263	24	48	7,900
84 H 150*	84	6A	GG	339,57	338,20	-	46	65	100	312	24	48	8,900
96 H 150*	96	6A	GG	388,08	386,71	-	46	65	120	360	24	48	10,100
120 H 150*	120	6A	GG	485,10	483,73	-	46	65	120	458	24	55	17,200
H - Teilung 12,7 mm für Riemenbreite 200													
14 H 200	14	6F	ST	56,60	55,22	64	58,7	70	40	-	11	24	1,100
16 H 200	16	6F	ST	64,68	63,31	70	58,7	70	45	-	11	28	1,400
18 H 200	18	6F	ST	72,77	71,39	79	58,7	70	55	-	14	32	1,800
19 H 200	19	6F	ST	76,81	75,44	82,5	58,7	70	60	-	14	34	2,100
20 H 200	20	6F	ST	80,85	79,48	87	58,7	70	62	-	14	35	2,300
21 H 200	21	6F	ST	84,89	83,52	91	58,7	70	65	-	14	38	2,600
22 H 200	22	6F	ST	88,94	87,56	94	58,7	70	68	-	14	41	2,800
24 H 200	24	6F	ST	97,02	95,65	102	58,7	70	72	-	14	45	3,400
26 H 200	26	6F	ST	105,11	103,73	112	58,7	70	80	-	14	35	2,300
28 H 200	28	6F	ST	113,19	111,82	120	58,7	70	80	-	14	35	2,500
30 H 200	30	6F	ST	121,28	119,90	128	58,7	70	80	-	14	40	2,900
32 H 200	32	6F	ST	129,36	127,99	135	58,7	70	80	-	14	40	3,200
36 H 200	36	6WF	ST	145,53	144,16	150	58,7	70	80	118	14	45	3,800
40 H 200	40	6WF	ST	161,70	160,33	168	58,7	70	80	134	14	45	4,100
44 H 200	44	6WF	GG	177,87	176,50	184	58,7	70	80	150	19	45	4,400
48 H 200	48	6WF	GG	194,04	192,67	200	58,7	75	90	166	24	48	5,100
60 H 200	60	6A	GG	242,55	241,18	-	58,7	75	90	215	24	50	7,100
72 H 200	72	6A	GG	291,06	289,69	-	58,7	75	100	263	28	50	8,000
84 H 200*	84	6A	GG	339,57	338,20	-	58,7	75	100	312	28	50	12,000
96 H 200*	96	6A	GG	388,08	386,71	-	58,7	75	120	360	28	50	13,600
120 H 200*	120	6A	GG	485,10	483,73	-	58,7	75	120	458	28	57	16,600
H - Teilung 12,7 mm für Riemenbreite 300													
16 H 300	16	6F	ST	64,68	63,31	70	85,7	100	45	-	11	28	2,000
18 H 300	18	6F	ST	72,77	71,39	79	85,7	100	54	-	19	32	2,600
19 H 300	19	6F	ST	76,81	75,44	82,5	85,7	100	60	-	19	34	2,900
20 H 300	20	6F	ST	80,85	79,48	87	85,7	100	62	-	19	35	3,200
21 H 300	21	6F	ST	84,89	83,52	91	85,7	100	65	-	19	38	3,600
22 H 300	22	6F	ST	88,94	87,56	94	85,7	100	68	-	19	41	4,000
24 H 300	24	6F	ST	97,02	95,65	102	85,7	100	72	-	19	45	4,700
26 H 300	26	6F	ST	105,11	103,73	112	85,7	100	80	-	19	35	3,300
28 H 300	28	6F	ST	113,19	111,82	120	85,7	100	80	-	19	35	3,600
30 H 300	30	6F	ST	121,28	119,90	128	85,7	100	80	-	19	40	4,200
32 H 300	32	6F	ST	129,36	127,99	135	85,7	100	80	-	19	40	4,300
36 H 300	36	6WF	ST	145,53	144,16	150	85,7	100	80	118	19	45	5,200
40 H 300	40	6WF	ST	161,70	160,33	168	85,7	100	80	134	19	45	5,600



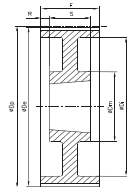
Ausf. 5F



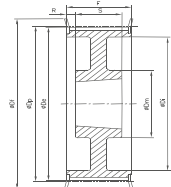
Ausf. 7A



Ausf. 9A



Ausf. 9W



Ausf. 9WF

Bezeichnung	Anzahl der Zähne	Ausführung	Material	D _p (mm)	D _e (mm)	D _f (mm)	F (mm)	D _m (mm)	A (mm)	Vorbohrung d (mm)	Fertigbohrung d _{max} (mm)	Gewicht (≈kg)
XH - Teilung 22,225 mm für Riemenbreite 200												
18 XH 200*	18	5F	GG	127,34	124,55	140	64	-	18	20	50	5,000
20 XH 200*	20	5F	GG	141,49	138,69	155	64	-	18	20	55	6,000
22 XH 200*	22	5F	GG	155,64	152,84	170	64	-	18	20	65	7,200
24 XH 200*	24	5F	GG	169,79	166,99	184	64	-	18	25	70	8,600
26 XH 200*	26	5F	GG	183,94	181,14	198	64	-	18	25	80	10,100
28 XH 200*	28	9WF	GG	198,08	195,29	212	64	120	18	25	70	9,600
30 XH 200*	30	9WF	GG	212,23	209,44	227	64	120	18	25	70	10,400
32 XH 200*	32	9WF	GG	226,38	223,59	240	64	120	18	25	75	11,200
40 XH 200*	40	9WF	GG	282,98	280,18	297	64	160	18	25	80	16,000
48 XH 200*	48	9W	GG	339,57	336,78	-	64	160	-	30	85	18,400
60 XH 200*	60	7A	GG	424,47	421,67	-	64	190	-	30	85	24,300
72 XH 200*	72	7A	GG	509,36	506,56	-	64	190	-	40	85	28,100
84 XH 200*	84	7A	GG	594,25	591,46	-	64	190	-	40	90	31,900
96 XH 200*	96	7A	GG	679,15	676,35	-	64	190	-	40	90	37,000
XH - Teilung 22,225 mm für Riemenbreite 300												
18 XH 300*	18	5F	GG	127,34	124,55	140	90	-	35	20	50	6,800
20 XH 300*	20	5F	GG	141,49	138,69	155	90	-	35	20	55	7,400
22 XH 300*	22	5F	GG	155,64	152,84	170	90	-	35	20	65	9,000
24 XH 300*	24	5F	GG	169,79	166,99	184	90	-	35	25	70	10,600
26 XH 300*	26	5F	GG	183,94	181,14	198	90	-	35	25	80	13,000
28 XH 300*	28	5F	GG	198,08	195,29	212	90	-	35	25	70	12,000
30 XH 300*	30	5F	GG	212,23	209,44	227	90	-	35	25	70	13,000
32 XH 300*	32	5F	GG	226,38	223,59	240	90	-	35	25	75	14,700
40 XH 300*	40	9WF	GG	282,98	280,18	297	90	160	35	25	80	19,900
48 XH 300*	48	9A	GG	339,57	336,78	-	90	160	-	30	85	22,500
60 XH 300*	60	9A	GG	424,47	421,67	-	90	190	-	30	85	31,500
72 XH 300*	72	9A	GG	509,36	506,56	-	90	190	-	40	85	36,400
84 XH 300*	84	7A	GG	594,25	591,46	-	90	190	-	40	90	43,400
96 XH 300*	96	7A	GG	679,15	676,35	-	90	190	-	40	90	48,500
XH - Teilung 22,225 mm für Riemenbreite 400												
18 XH 400*	18	5F	GG	127,34	124,55	140	119	-	47	20	50	8,500
20 XH 400*	20	5F	GG	141,49	138,69	155	119	-	47	20	55	9,400
22 XH 400*	22	5F	GG	155,64	152,84	170	119	-	47	20	65	11,500
24 XH 400*	24	5F	GG	169,79	166,99	184	119	-	47	25	70	13,400
26 XH 400*	26	5F	GG	183,94	181,14	198	119	-	47	25	80	15,600
28 XH 400*	28	5F	GG	198,08	195,29	212	119	-	47	25	70	14,500
30 XH 400*	30	5F	GG	212,23	209,44	227	119	-	47	25	70	16,000
32 XH 400*	32	5F	GG	226,38	223,59	240	119	-	47	25	75	18,000
40 XH 400*	40	9WF	GG	282,98	280,18	297	119	160	47	25	80	24,000
48 XH 400*	48	9W	GG	339,57	336,78	-	119	160	-	30	85	30,800
60 XH 400*	60	9A	GG	424,47	421,67	-	119	190	-	30	85	36,200
72 XH 400*	72	9A	GG	509,36	506,56	-	119	190	-	40	85	42,700
84 XH 400*	84	9A	GG	594,25	591,46	-	119	190	-	40	90	49,700
96 XH 400*	96	9A	GG	679,15	676,35	-	119	190	-	40	90	59,900